



Indoor & Outdoor
Waste & Recycling
Receptacle Solutions



RECYCLING CAN BE BEAUTIFUL

At Magnuson Group, we believe all furnishings placed within both interior and exterior spaces should provide strong aesthetic value – including waste & recycling receptacles – which up to now, have been considered primarily for their functional purpose alone.

We believe recycling can be beautiful.

We hope as you review the pages of this catalog, you will agree.



VALUTA PG. 4



SOTARE PG. 5



SLOPE PG. 6



UMEA PG. 7



STORLEK PG. 8



STILO PG. 9



RIGA PG. 10



ZURICH PG. 11



BALLOON PG. 12



LAUSANNE PG. 13



MECORA PG. 14



RETTO PG. 15



SMOKE PG. 15



MY PERSONAL RECYCLER PG. 16



SORTMATE PG. 17



AXIANE PG. 17



DROP PG. 18



SILO PG. 18



RUND PG. 19

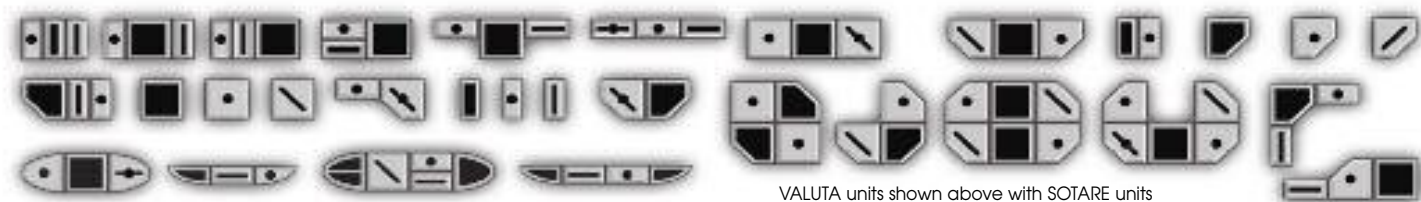


BASICS PG. 19



VALUTA™

Designed by QDesign, VALUTA is a modular family of rectilinear waste & recycling receptacles. Constructed of steel, VALUTA offers 4 sized bodies – 40, 35, 20 and 14-gallon units - each with 4 top options for easy sorting of waste, paper, cans and bottles. VALUTA comes in a variety of powder coat paint colors, and all models include integrated bag arms and an internal rigid liner. VALUTA is also available with locking tops for secure disposal, and all VALUTA units can be configured with the SOTARE family. Made in the USA.



VALUTA units shown above with SOTARE units




SOTARE™

Designed by QDesign, SOTARE is a modular family of curvilinear waste & recycling receptacles which includes a 34-gallon half-elliptical unit and 2 quarter-elliptical units [left side, right side]. These 3 units combine with 14 available top options to create numerous configurations – in order to create the ideal solution for the client’s design aesthetic, recycling program requirements and available footprint. SOTARE units are constructed of powder-coated steel, and can stand alone or be grouped together. All SOTARE units can also be configured with all units in the VALUTA family. Made in the USA.



SOTARE units shown with VALUTA units



MG SLOPE™

Designed by MG Studio, SLOPE combines steel construction with strong flexibility and design aesthetic. Available in a 38-gallon and 32-gallon “junior height” unit, SLOPE offers 8 top options with both single- and double-top openings for maximum configurability – so SLOPE units can be “single” or “double” units that stand alone or group together. SLOPE finishes include stainless steel and 6 paint colors, and finished units can mix & match stainless and paint finishes, achieving the desired look. SLOPE units include integrated bag arms and non-skid glides, and there is an optional internal rigid liner. Made in the USA.

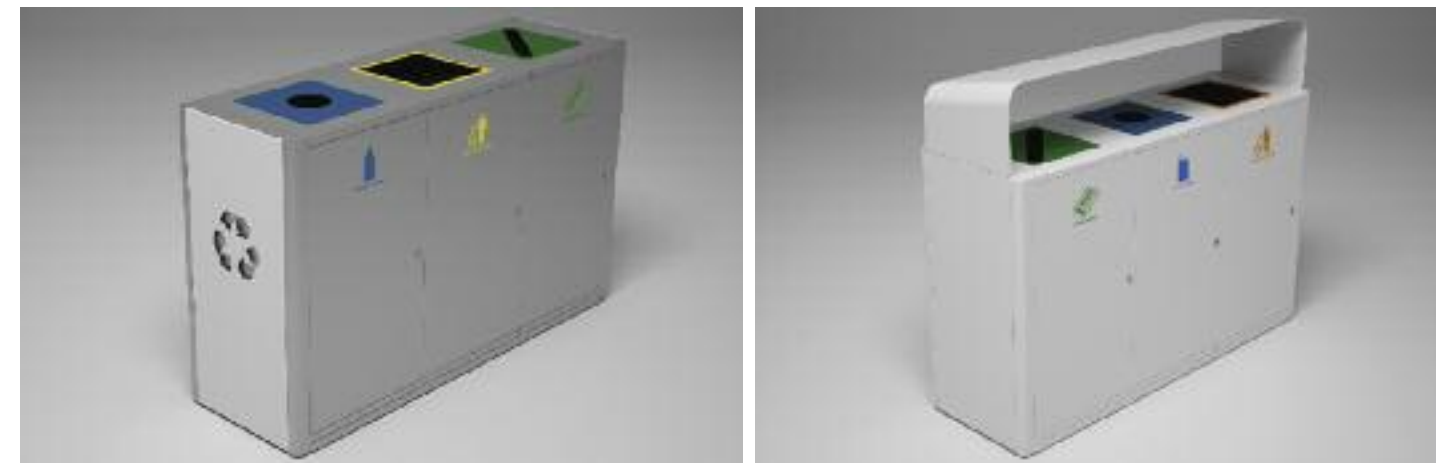


SLOPE units shown above with single and double tops



MG UMEA

Designed by QDesign, UMEA is a new receptacle family unmatched in its versatility. Constructed of painted steel and suitable for both indoors and outdoors, UMEA models can be 1, 2 or 3-compartments wide – each with selectable top inserts and corresponding front graphics. All UMEA models include locking front-door access, internal rigid liners and steel side panels; optional features include a sloped or flat hood and choice of side panel cutouts. Available main colors include white, silver and mineral bronze; accent colors include green, blue, orange and yellow. Made in the USA.





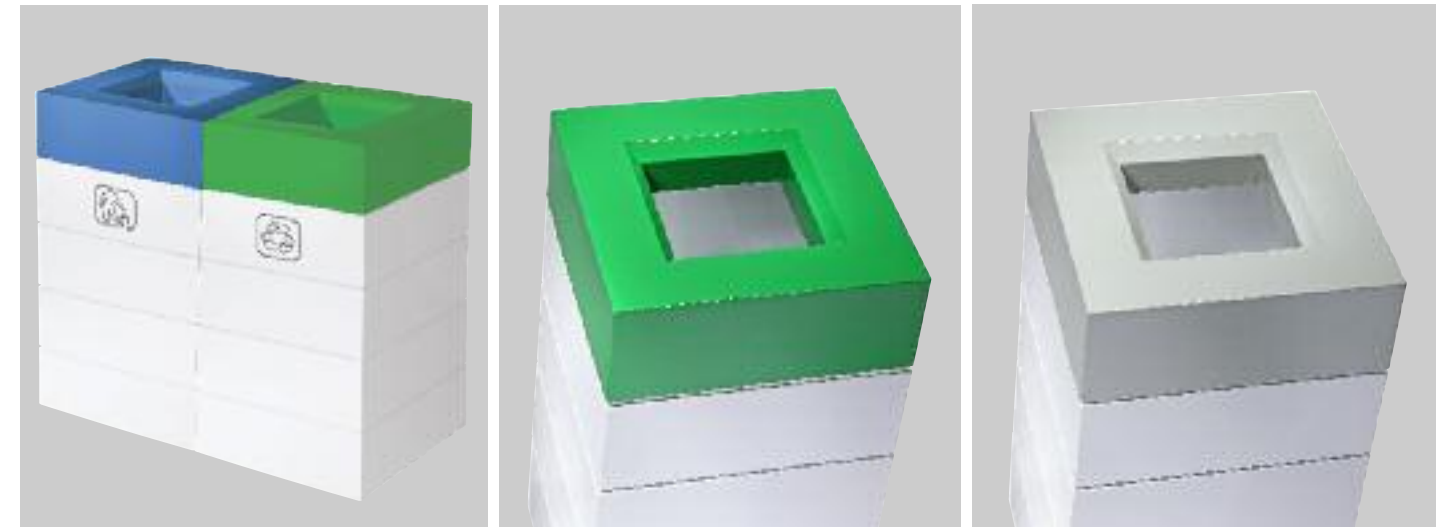
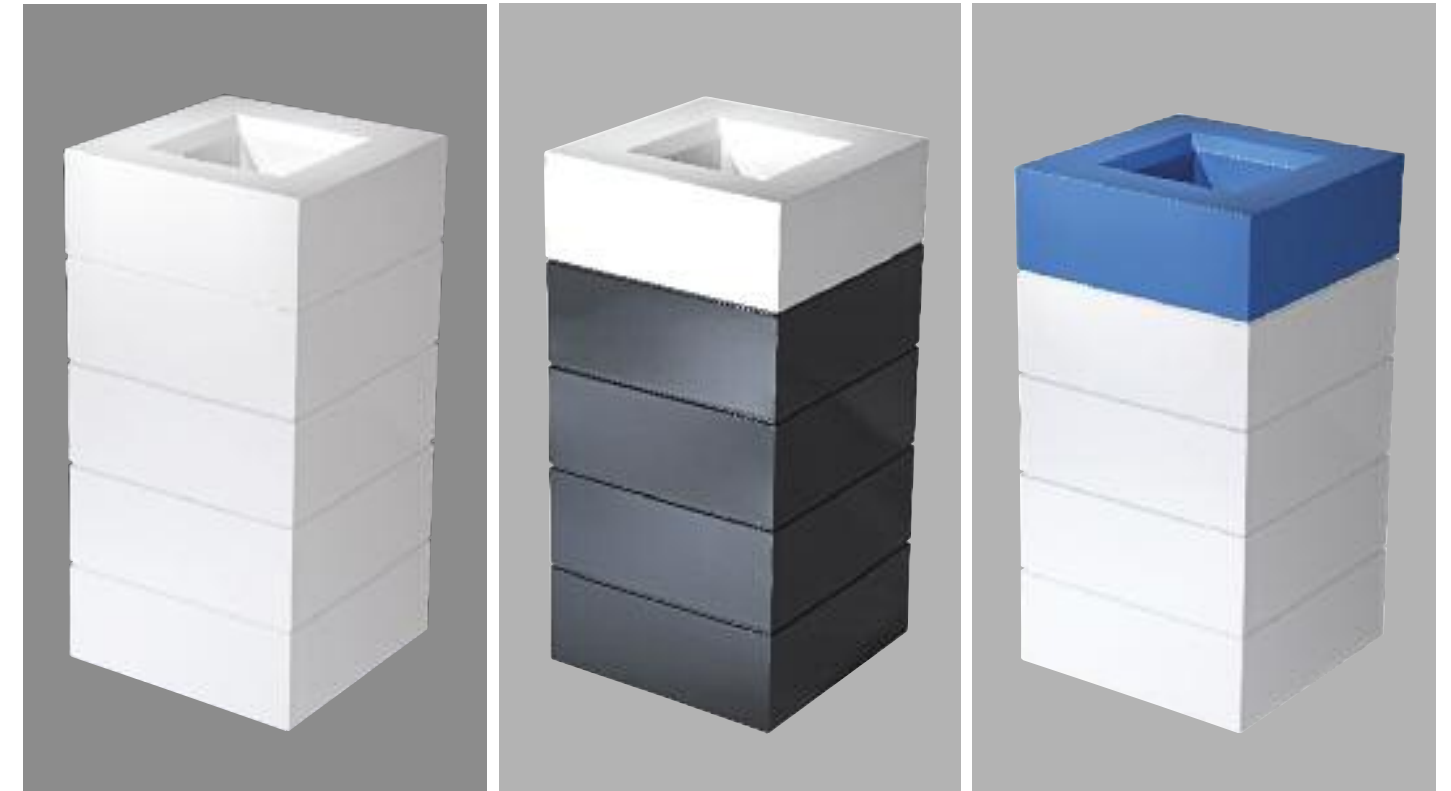
STORLEK™

STORLEK, a large 70-gallon receptacle designed by QDesign, can stand alone or be grouped together, and can be used for both waste & recycling. STORLEK is available with 5 top options – a waste opening, a recycling opening, a paper opening, a tray-top for foodservice areas, and a tent top. All STORLEK models are made of powder-coated steel and include an internal rigid liner along with a locking, hinged front door for quick and easy bag replacement. STORLEK units are also available with a variety of designer metal side panels. Made in the USA.




STILO

Designed by S.I., STILO is a painted steel waste container that presents a clean, strong design aesthetic alongside strong functionality. Featuring high-gloss powder coat paint finishes, STILO offers 26 gallon capacity and is available in a white or anthracite body, which can be paired with tops which are available in white, blue, green or beige. All STILO units include an internal rigid liner and removable tops. STILO units can stand alone or group together, and pictograms are available to identify the waste stream for each unit.





RIGA

Designed by JM Massana and JM Tremoleda, RIGA is a family of waste receptacles that offers multiple capacities, as well as a combination ash/trash unit and matching umbrella stand. Featuring stainless steel bodies with a painted silver removable top and integrated bag ring, RIGA receptacles capacities range from 24 gallons to 5 gallons, and present a square footprint and striking rectilinear aesthetic. RIGA units can stand alone or group together, and all units, especially the large receptacles and combination ash/trash unit, are suitable for use in under-cover exterior environments.




ZURICH

Designed by Joan Gasper, ZURICH is a family of waste receptacles constructed of 100% recyclable galvanized steel that offers 3 size capacities ranging from 26 to 12 gallons. With striking rectilinear design, ZURICH units can stand alone or group together. All ZURICH units feature integrated bag arms, a large top opening and hinged lid for easy emptying – a silver painted steel lid on the large model, and a black polycarbonate lid on the 2 small units. ZURICH units can be supplied with a pictogram on the front panel to indicate the waste stream.





BALLOON

Designed by Mattiussi Ecologia Spa, BALLOON is a colorful, practical waste & recycling solution suitable for both indoor and outdoor environments. Manufactured from 100% recyclable polyethylene with molded-in color and UV treatment, BALLOON units incorporate anti-tamper locking containers with rainproof access openings and bases that can be weighted or fixed to the ground. BALLOON offers both a waste and recycling opening, and can include an ashtray. BALLOON's narrow profile makes it an excellent solution where space is tight. Color options include blue, green, yellow, white, grey, dark green and red – atop BALLOON's base made of black recycled plastic.




LAUSANNE

Designed by Toni Arola, LAUSANNE is an attractive, high-capacity and very functional waste receptacle with 32-gallon capacity that is designed for use in outdoor environments. Manufactured from steel plate and available in both satin stainless and painted anthracite body finishes, LAUSANNE features a vented cylindrical body and a silver aluminum top and base. Depending on the client requirement, LAUSANNE can be ordered with or without a top ashtray. All LAUSANNE units include an internal bag ring and can be incorporated easily into any outdoor environment.



MG Magnuson Group **MECORA**

Designed by Mattiussi Ecologia Spa, MECORA is a strong, durable waste receptacle with 32-gallon capacity which is designed and manufactured to handle the rigor of outdoor environments, including parks, patios and other outdoor venues. Manufactured of steel plate and painted in a textured bronze epoxy finish, MECORA's tapered design provides a single internal compartment with two top openings for easy access under a protective weather lid that is offered with or without an ashtray. MECORA secures to the ground and features a locking hinged top for easy removal of waste.



MG Magnuson Group **RETTO**



Designed by Mattiussi Ecologia Spa, RETTO is a sturdy, front-loading receptacle with 26-gallon capacity that combines strong functional elements and rectilinear design. Constructed of steel plate finished in textured bronze paint, RETTO features a generous access opening, a locking front door and an internal galvanized liner. RETTO can be secured to the ground and is available with or without an ashtray on top.



MG Magnuson Group **SMOKE**



Designed by Mattiussi Ecologia Spa, SMOKE is a clean and compact ash and trash combination unit that fits perfectly into any exterior or interior space. Made of steel plate with a textured bronze paint finish, SMOKE offers 6 gallons of waste capacity and a stainless steel grid ash tray. SMOKE has a locking front door with removable internal liner, and can be secured to the ground.





MY PERSONAL RECYCLER

Designed by Luisangelo Cozza, MY PERSONAL RECYCLER integrates sorting of 3 waste & recycling discards into a compact, deskside unit – serving to achieve function and increase sustainability with creative design. Made of recyclable ABS, MY PERSONAL RECYCLER's 2 models both provide 2 concealed containers and 1 instant access compartment – the NX-01 offers a sliding lid that doubles as a personal storage tray for small items, while the NX-02 offers a lifting top lid. Internal containers can easily be removed for cleaning. MY PERSONAL RECYCLER color options include white, green, blue or yellow.



SORTMATE



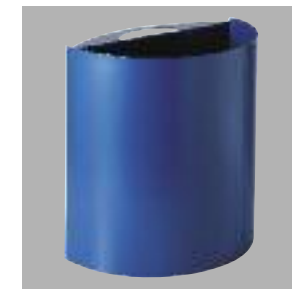
Designed by Studio Manade, SORTMATE brings a modular, flexible system of sorting waste and recyclables to the workstation. Available in 100% recycled plastic, polypropylene [various colors] or ABS, SORTMATE offers small bins of various sizes that attach to each other, or that can be hung from the desk's underside using TOTRIB. With SORTMATE, additional bins can be added over time as required.



AXIANE



AXIANE is a collection of colorfully painted steel deskside wastebaskets that includes both half-round and full-round models. Available in 7 colors including white, black, silver, coral, straw yellow, green apple and azure blue, AXIANE is a bright and functional addition to any space.



 **DROP**



Designed by Paloma Gil, DROP is an elegant wastebasket made of painted steel with a stainless steel internal bag ring that will adorn any executive office or conference room. Available in 2 models that offer 9.5 and 7.6 gallon capacity, DROP is available in 3 finish colors including grey, white and black.



 **RUND**



RUND is a stylish free-standing waste container with a capacity of 14.8 gallons. Featuring a painted black steel body and polished chrome top with a 360 degree rotating lid, all RUND units are supplied with an internal steel liner and removable top for easy emptying.



 **SILO**



SILO is a simple, attractive, round steel wastebasket that offers capacity of 3.7 gallons. Available in both brushed stainless steel and black or metallic grey paint finishes, SILO is a simple yet elegant desk side solution for any office or conference room.



 **BASICS**



BASICS is a 3.7 gallon capacity steel wastebasket that fits any space and need, providing required function with strong aesthetic at an excellent price point. BASICS is available in stainless steel or painted black with or without a stainless top trim.



Local Contact

--