



BODEN

Outdoor/Indoor Cast Concrete Benches & Planters



Bench Specifications

Model	H x W x D	Weight	Product Description	Color / Finishes
BOD-B-01	16 1/2" x 61 1/2" x 17 3/4"	185 lbs.	Outdoor/Indoor high performance concrete bench.	White Polished Concrete, Grey Polished Concrete, Black Polished Concrete, Green Polished Concrete, Sand Polished Concrete or Terra Cotta Polished Concrete
BOD-B-01CM	16 1/2" x 61 1/2" x 17 3/4"	185 lbs.	Custom color outdoor/indoor high performance cast concrete bench. Minimum order quantity of 5 for custom color.	Custom
BOD-B-SKATE	3/4" x 1" x 3 1/2"	2 lbs.	Single aluminum skate stop for use on BODEN bench. Assembly required, includes epoxy.	Burnished Aluminum
BOD-B-MOUNT	1/8" x 9" x 3 7/8"	1 lb.	Pair of mounting plates for use with BODEN Bench. Assembly required, includes epoxy.	Stainless Steel

Planter Specifications

Model	H x W x D	Weight	Product Description	Color / Finishes
BOD-P-01	18" x 18" x 18"	185 lbs.	Outdoor/Indoor high performance cast concrete planter.	White Polished Concrete, Grey Polished Concrete, Black Polished Concrete, Green Polished Concrete, Sand Polished Concrete or Terra Cotta Polished Concrete
BOD-P-01CM	18" x 18" x 18"	185 lbs.	Custom color outdoor/Indoor high performance cast concrete planter. Minimum order quantity 5.	Custom

Crafted by concrete artisans in Chicago, BODEN is cast with a glass fiber reinforced concrete mixture. The multi-step fabrication process is finished with a hand polish to ensure every surface is covered and then sealed to withstand the elements outdoors.

Finish Colors



White



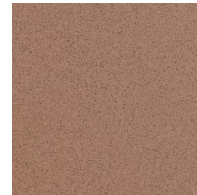
Grey



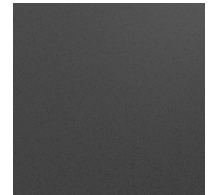
Green



Sand



Terra Cotta



Black

Natural Variation: Concrete is a natural material, expect some naturally occurring color variation.

Bench Additional Notes

Shipping: Ships via common carrier on an oversized pallet (72" L x 48" W x H: 24.75" H). Forklift required for receipt of common carrier delivery. Deliveries requiring more than a standard tailgate delivery available for additional charge, contact Customer Service for details. If you know you will be unable to unload the shipment from the truck, you must order "Lift Gate Service" for an additional charge. It is your responsibility to move the shipment from the delivery point. Redelivery charges will apply if you are unable to unload the shipment when it arrives.

Cleaning and Maintenance: For regular cleaning, use non-abrasive cleaner and a warm damp cloth. In cases of staining, apply OxiClean™ (add water to form a paste) to the stain and let sit for 8-12 hours. Remove and wash with a warm damp cloth. For cases of chipping or cracking, repair kits available, contact Magnuson Group for information.

Skate Stops and Mounting Plate: Mounting Plate (BOD-B-MOUNT) is sold in pairs and used to secure BODEN to the ground. A mounting plate is secured to each side of the bench using epoxy. Use bolts appropriate for the surface application to secure the mounting plate to the ground (bolts/screws not included).

Skate Stops (BOD-B-SKATE) are sold per unit and require minimal assembly: drilling two holes per skate stop and securing with epoxy, which is included.



Planter Additional Notes

General Care and Planting Guidelines: Concrete is susceptible to cracking under certain conditions. Please follow the guidelines below to reduce the risk of cracking in your planter.

To reduce the risk of cracking, it's important to minimize the possibility for expansion of dirt or other materials within the planter. Cracking is caused by expansion from within the planter and is often attributed to overwatering, lack of drainage or the material within the planter. BODEN includes drainage holes to keep water from pooling within the planter.

Be sure to select a potting mix appropriate for the chosen plant and climate. Potting mix is designed for container planting and facilitates aeration and drainage. Do not use potting soil or soil from the ground; these materials will expand under some conditions and could cause cracking.

For best results, ensure the potting mix selected drains well, does not compact, contains nutrients for the plant selected and has an appropriate pH level.

Not sure what potting mix to use? Consult with a local nursery or plant store or contact a local landscape architect to ensure the materials you use support a healthy and thriving plant and protect your planter against cracking.

Shipping: Ships via common carrier. Forklift required for receipt of common carrier delivery. Deliveries requiring more than a standard tailgate delivery available for additional charge, contact Customer Service for details. If you know you will be unable to unload the shipment from the truck, you must order "Lift Gate Service" for an additional charge. It is your responsibility to move the shipment from the delivery point. Redelivery charges will apply if you are unable to unload the shipment when it arrives.

