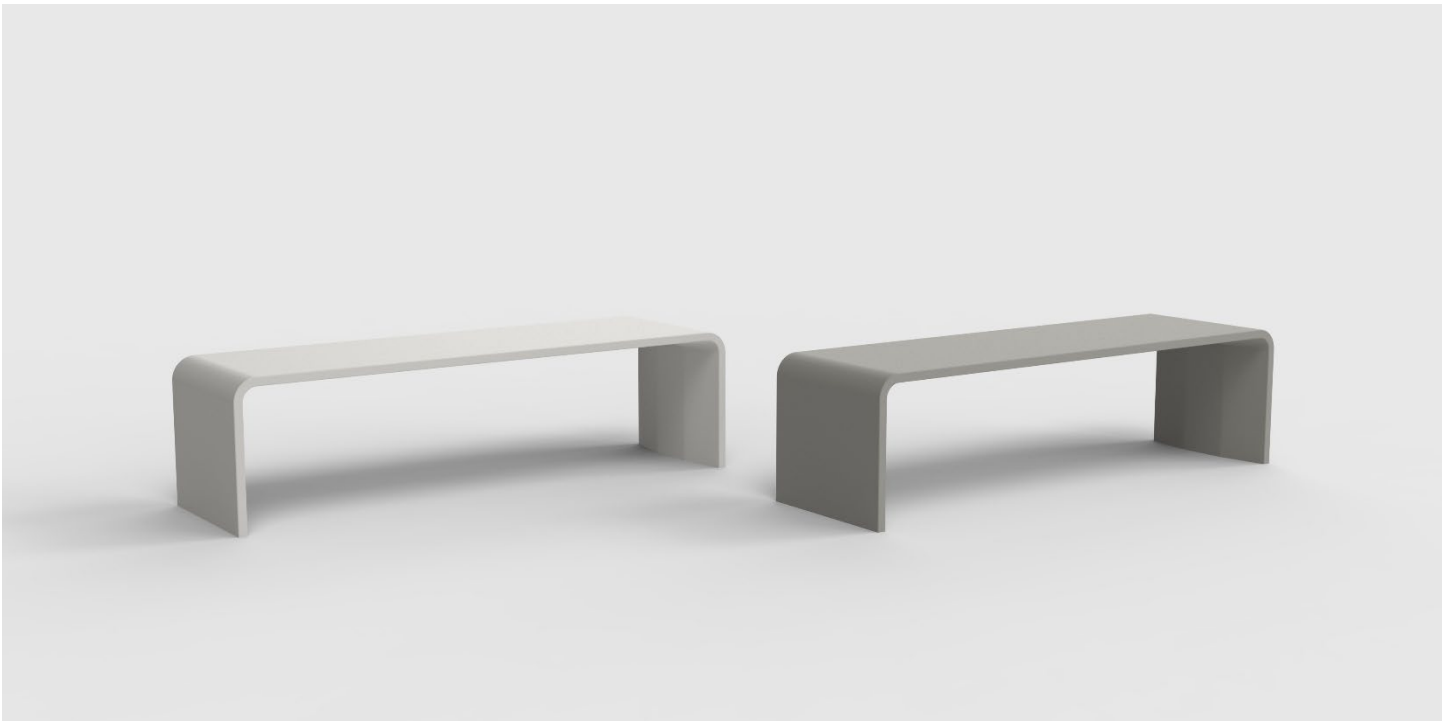




BODEN®

Outdoor/Indoor Cast Concrete Bench



Specifications & Finishes

Model	H x W x D	Weight	Product Description	Color / Finishes
BOD-B-01	16 1/2" x 61 1/2" x 17 3/4"	185 lbs.	Outdoor/Indoor high performance concrete bench.	White Polished Concrete or Grey Polished Concrete.
BOD-B-01CM	16 1/2" x 61 1/2" x 17 3/4"	185 lbs.	Custom color outdoor/indoor high performance cast concrete bench. Minimum order quantity of 5 for custom color.	Custom
BOD-B-SKATE	3/4" x 1" x 3 1/2"	2 lbs.	Single aluminum skate stop for use on BODEN® bench. Assembly required, includes epoxy.	Burnished Aluminum
BOD-B-MOUNT	1/8" x 9" x 3 7/8"	1 lb.	Pair of mounting plates for use with BODEN® Bench. Assembly required, includes epoxy.	Stainless Steel

Crafted by concrete artisans in Chicago, BODEN® is cast with a glass fiber reinforced cement mixture with additional internal structural reinforcement for rigidity. The multi-step fabrication process is finished with a hand polish to ensure every surface is covered and then sealed to withstand the elements outdoors.

Natural Variation: Concrete is a natural material, expect some naturally occurring color variation.

Shipping: Ships via common carrier on an oversized pallet (72" L x 48" W x H: 24.75" H). Forklift required for receipt of common carrier delivery. Deliveries requiring more than a standard tailgate delivery available for additional charge, contact Customer Service for details. If you know you will be unable to unload the shipment from the truck, you must order "Lift Gate Service" for an additional charge. It is your responsibility to move the shipment from the delivery point. Redelivery charges will apply if you are unable to unload the shipment when it arrives.

Cleaning and Maintenance: For regular cleaning, use non-abrasive cleaner and a warm damp cloth. In cases of staining, apply OxiClean™ (add water to form a paste) to the stain and let sit for 8-12 hours. Remove and wash with a warm damp cloth. For cases of chipping or cracking, repair kits available, contact Magnuson Group for information.

Skate Stops and Mounting Plate:

Mounting Plate (BOD-B-MOUNT) is sold in pairs and used to secure BODEN® to the ground. A mounting plate is secured to each side of the bench using epoxy. Use bolts appropriate for the surface application to secure the mounting plate to the ground (bolts/screws not included).

Skate Stops (BOD-B-SKATE) are sold per unit and require minimal assembly: drilling two holes per skate stop and securing with epoxy, which is included.

