



KASKAD® ASCEND

Planters



Product Description

KASKAD® ASCEND – bringing the KASKAD planter family to new heights.

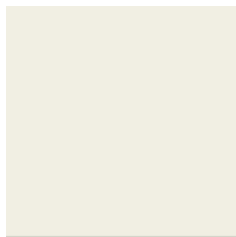
The elevated design evokes a lightness of scale by raising the planter’s body off the ground. Outset round legs cradle the body, emphasizing stability while maintaining the modern elegance of KASKAD. Available at three heights, KASKAD ASCEND provides solutions for varying sightline landscapes within space.

Specifications & Finishes

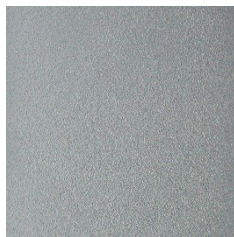
Model	H x W x D	Weight	Product Description	Color / Finishes
KAS-A-0936S	24 1/4" x 36" x 11 5/8"	33 lbs.	Indoor painted steel rectangular planter mounted to painted steel leg base with two fully enclosed liners for plants.	Textured Bronze, Textured White RAL 9010, Textured Silver RAL 9006, Textured Black, Textured Beige

KAS-A-0936M	32 1/4" x 36" x 11 5/8"	40 lbs.	Indoor painted steel rectangular planter mounted to painted steel leg base with two fully enclosed liners for plants.	RAL 7032, Textured Yellow RAL 1024, Textured Copper Brown RAL 8004, Textured Oxide Red RAL 3009, Textured Green RAL 6020 or Textured Blue RAL 5008.
KAS-A-0936H	40 1/4" x 36" x 11 5/8"	48 lbs.	Indoor painted steel rectangular planter mounted to painted steel leg base with two fully enclosed liners for plants.	

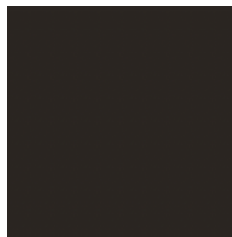
Finishes



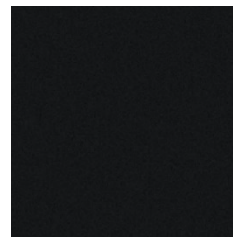
Textured White
RAL 9010



Textured Silver
RAL 9006



Textured Bronze



Textured Black



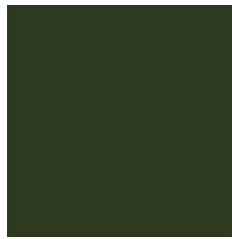
Textured Beige
RAL 7032



Textured Blue
RAL 5008



Textured Copper
Brown RAL 8004



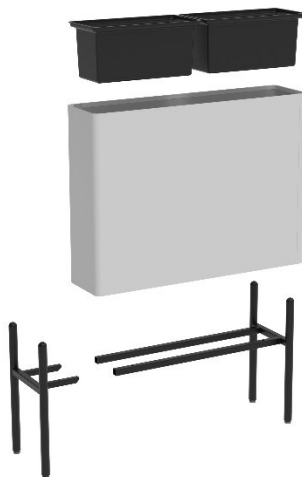
Textured Green
RAL 6020



Textured Oxide Red
RAL 3009



Textured Yellow
RAL 1024



KAS-A-0936H

KAS-A-0936M

KAS-A-0936S



KASKAD is a versatile planter collection featuring multiple sizes and footprints, offering mobility, modularity, and the ability to connect units together for dynamic space division.

