

NEW PORT Tool Rail

Overview:

NEW PORT is a flexible, versatile tool rail system that creates clean, personal “up and off the desk” organization which can be configured in a number of different ways, as follows:

- The NEW PORT tool rail is available in varying lengths to accommodate different desk sizes.
- The NEW PORT tool rail can include no privacy screen or a 15-3/8” high privacy screen made of acoustic fabric, acoustic PET, writeable glass or opaque tempered glass.
- The NEW PORT tool rail can be mounted to the desk at multiple heights, and in multiple ways.
- The NEW PORT tool rail can be used in single-sided or double-sided desk environments.
- The NEW PORT tool rail can accommodate a wide range of NEW WAVE desk accessories.



NEW PORT shown with no privacy screen and NEW WAVE accessories



NEW PORT shown with privacy screen and NEW WAVE accessories

HOW TO ORDER NEW PORT

1. First, configure your New Port tool rail system by referring to the Tool Rail & Screen Specification Table below [Table I].
 - a. Select a tool rail length and finish color [Column A].
 - b. If specifying a tool rail without a screen, select a cover color and identify the appropriate model number based on tool rail length [Column B].
 - c. If specifying a tool rail with a screen, choose your desired screen material - Acoustic Fabric (and corresponding finish color), Acoustic PET (and corresponding finish color), Opaque Tempered Glass or Writeable Glass; and identify the appropriate model number based on tool rail length [Column C].
2. Next, select a mounting setup from the Mounting Specification Table below [Table II].
 - a. Select a mounting height [above the desk] for the tool rail [Column A].
 - b. Next, select the appropriate mounting hardware for the desk and identify the appropriate model number based on mounting level [Column B].
3. Finally, select your New Wave accessories which hang off of the New Port tool rail.

**Table I –
TOOL RAIL & SCREEN SPECIFICATION TABLE**



Tool Rail (Including End Caps)	Tool Rail Without Screen (Including Cover)	Acoustic Fabric Screen	Acoustic PET Screen	Opaque Tempered Glass Screen	Writeable Glass Screen [for use with dry erase markers]
		For Acoustic Fabric Screen finish options, please see page 4	For Acoustic PET Screen finish options, please see page 5		
Tool Rail Length	Model	Model	Model	Model	Model
21"	NP-53EP	NP-53CTA	NP-53CFA	NP-53CVO	NP-53CVT
31 1/2"	NP-80EP	NP-80CTA	NP-80CFA	NP-80CVO	NP-80CVT
39 3/8"	NP-100EP	NP-100CTA	NP-100CFA	NP-100CVO	NP-100CVT
47 1/4"	NP-120EP	NP-120CTA	NP-120CFA	NP-120CVO	NP-120CVT
55 1/8"	NP-140EP	NP-140CTA	NP-140CFA	NP-140CVO	NP-140CVT
63"	NP-160EP	NP-160CTA	NP-160CFA	NP-160CVO	NP-160CVT

*Custom tool rail lengths available, contact Customer Service for details.



**Table II –
MOUNTING SPECIFICATION TABLE**



A. Mounting Height	B. Mounting Type & Hardware		
	Single Sided Desk*	Double Sided Desk	Thru Desk**
Mounting Height	Model	Model	Model
Desktop Level	NP-00P	NP-00M	NP-00F
3 15/16" Above Desk	NP-10P	NP-10M	NP-10F
7 7/8" Above Desk	NP-20P	NP-20M	NP-20F

*The minimum desk surface depth for mounting on a single sided desk edge is 1 5/8".

**The minimum hole size for mounting through the desk is 13/32".

**Table III –
OVERALL DIMENSIONS**

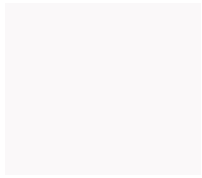
Please note, the overall dimensions shown here include the tool rail, screen (if applicable) and mounting hardware.

Overall Dimensions – <u>No</u> Screen (Model NP-EP)												
Toolbar Length	Desktop Level Mount				3 15/16" Above Desk Mount				7 7/8" Above Desk Mount			
	H	W	D	Shipping Weight	H	W	D	Shipping Weight	H	W	D	Shipping Weight
21"	2 3/8"	21"	1 11/16"	5 lbs.	6 5/16"	21"	1 11/16"	7 lbs.	10 1/4"	21"	1 11/16"	8 lbs.
31 1/2"	2 3/8"	31 1/2"	1 11/16"	7 lbs.	6 5/16"	31 1/2"	1 11/16"	9 lbs.	10 1/4"	31 1/2"	1 11/16"	10 lbs.
39 3/8"	2 3/8"	39 3/8"	1 11/16"	7 lbs.	6 5/16"	39 3/8"	1 11/16"	9 lbs.	10 1/4"	39 3/8"	1 11/16"	10 lbs.
47 1/4"	2 3/8"	47 1/4"	1 11/16"	8 lbs.	6 5/16"	47 1/4"	1 11/16"	10 lbs.	10 1/4"	47 1/4"	1 11/16"	11 lbs.
55 1/8"	2 3/8"	55 1/8"	1 11/16"	9 lbs.	6 5/16"	55 1/8"	1 11/16"	11 lbs.	10 1/4"	55 1/8"	1 11/16"	12 lbs.
63"	2 3/8"	63"	1 11/16"	10 lbs.	6 5/16"	63"	1 11/16"	12 lbs.	10 1/4"	63"	1 11/16"	13 lbs.

Overall Dimensions – <u>With</u> Screen (Models NP-CFA, CTA, CVO, CVT)												
Toolbar Length	Desktop Level Mount				3 15/16" Above Desk Mount				7 7/8" Above Desk Mount			
	H	W	D	Shipping Weight	H	W	D	Shipping Weight	H	W	D	Shipping Weight
21"	17 3/4"	21"	1 11/16"	21 lbs.	21 11/16"	21"	1 11/16"	23 lbs.	25 5/8"	21"	1 11/16"	24 lbs.
31 1/2"	17 3/4"	31 1/2"	1 11/16"	23 lbs.	21 11/16"	31 1/2"	1 11/16"	25 lbs.	25 5/8"	31 1/2"	1 11/16"	26 lbs.
39 3/8"	17 3/4"	39 3/8"	1 11/16"	25 lbs.	21 11/16"	39 3/8"	1 11/16"	27 lbs.	25 5/8"	39 3/8"	1 11/16"	28 lbs.
47 1/4"	17 3/4"	47 1/4"	1 11/16"	28 lbs.	21 11/16"	47 1/4"	1 11/16"	30 lbs.	25 5/8"	47 1/4"	1 11/16"	31 lbs.
55 1/8"	17 3/4"	55 1/8"	1 11/16"	31 lbs.	21 11/16"	55 1/8"	1 11/16"	33 lbs.	25 5/8"	55 1/8"	1 11/16"	34 lbs.
63"	17 3/4"	63"	1 11/16"	35 lbs.	21 11/16"	63"	1 11/16"	37 lbs.	25 5/8"	63"	1 11/16"	38 lbs.

NEW PORT FINISH COLORS

Tool Rail Finish Colors:



White



Sand

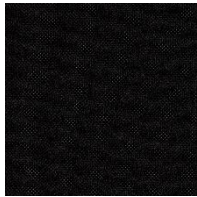


Silver



Black

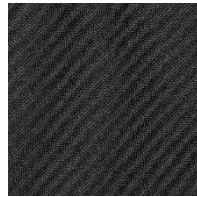
Atlantic Fabric Screen Finish Colors:



Basalt 60999



Champagne 61166



Charcoal 60025



Fallow 63057



Jasper 64092



Maya 66063



Mineral 60143



Nordic 67030



Prussia 66064



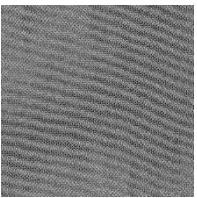
Shadow 61163



Storm 67043



String 61078



Zinc 60011

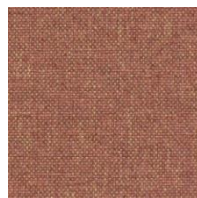
Roccia Fabric Screen Finish Colors:



Alpaga 1502



Amaranth 4502



Kilim 5504



Jute 3506



Liberty 6508



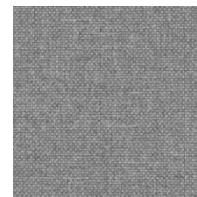
Denim 6502



Madras 3508



Loden 7504



Metis 8501

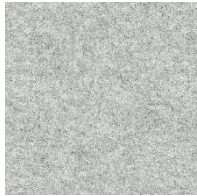


Chambray 8030

PET Screen Finish Colors:



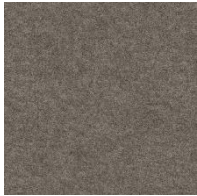
Abyss F08



Alabaster F13



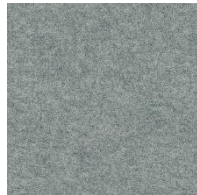
Amber F15



Chestnut F03



Cork F10



Dragee F05



Moss F18



Vermillion F19

NEW WAVE Product Overview – The following NEW WAVE accessories can be used with NEW PORT:



NW-10



NW-103



NW-21



NW-22



NW-23NP/SUM



NW-30



NW-40



NW-52



NW-60



NW-70



NW-80



PNP-NP-08



MELO-NP-TM



MELO-NP-UM