



STILLY

Acoustic Wall Panels



Specifications & Finishes

Model	H x W x D	Shipping Weight	Product Description	Color / Finishes
STILLY-10	17 3/8" x 17 3/8" x 1 9/16"	7 lbs. (per carton of 4)	Acoustic fabric wall panel in solid color and flat texture. Sold in cartons of 4 only.	White frame with fabric in Grey, Orange, Dark Grey, Red, Ivory, Blue or Green [see next page]
STILLY-20	17 3/8" x 17 3/8" x 2 1/8"	7 lbs. (per carton of 4)	Acoustic fabric wall panel in solid color and raised pyramid texture. Sold in cartons of 4 only.	White frame with fabric in Grey, Orange, Dark Grey, Red, Ivory, Blue or Green [see next page]

STILLY Fabric Colors:

STILLY fabric colors are as follows:



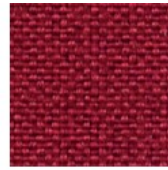
Grey



Orange



Dark Grey



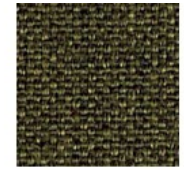
Red



Ivory



Blue



Green

STILLY Technical Information:

STILLY has been tested in accordance with ISO354 & ISO 11654 standards for acoustics. The weighted sound absorption coefficient (ISO 11654) is .60, which gives STILLY a Class C rating.

STILLY fabric was tested in accordance with ASTM E-84 standards with a flame spread index of 5 and a smoke developed index of 400.

STILLY fabric meets the requirements for California Technical Bulletin 117-2013.

STILLY fabric also been tested in accordance with the below standards:

- ASTM D5034-09 (Grab Test)
- ASTM D4157-13 (Abrasion Resistance)
- AATCC 8-2007 (Colorfastness to Crocking)
- AATCC 16-2004 (Colorfastness to Light)

Further testing details on STILLY available upon request, please contact [contact us](#) for details.

STILLY was a recipient of the [2014 Good Design Award](#) by the Chicago Athenaeum: Museum of Architecture and Design.



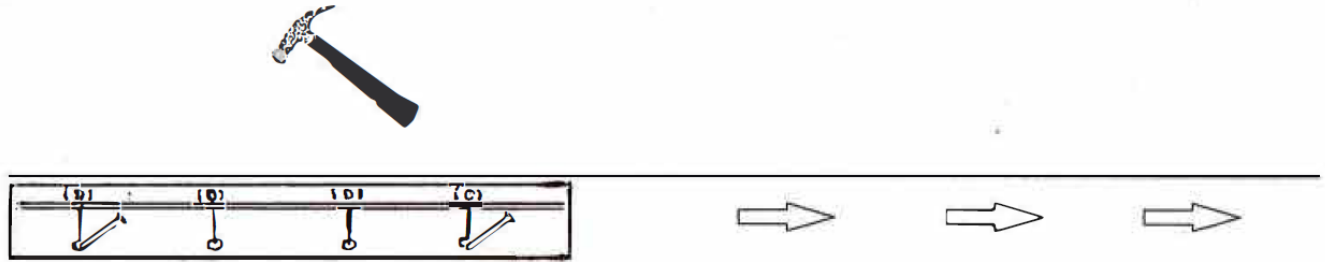
Mounting STILLY:

STILLY is mounted using a bracket, which is mounted on the wall with nails or screws. STILLY is then clipped directly onto the bracket, without the use of any additional screws or nails.

1. Mark a line on the wall.



2. Place the bracket over the line and fasten it with nails or screws.



3. Attach the acoustic panel to the bracket using the clips located on the bracket. Note: STILLY panels can be easily secured to adjacent panels using male/female connectors.

