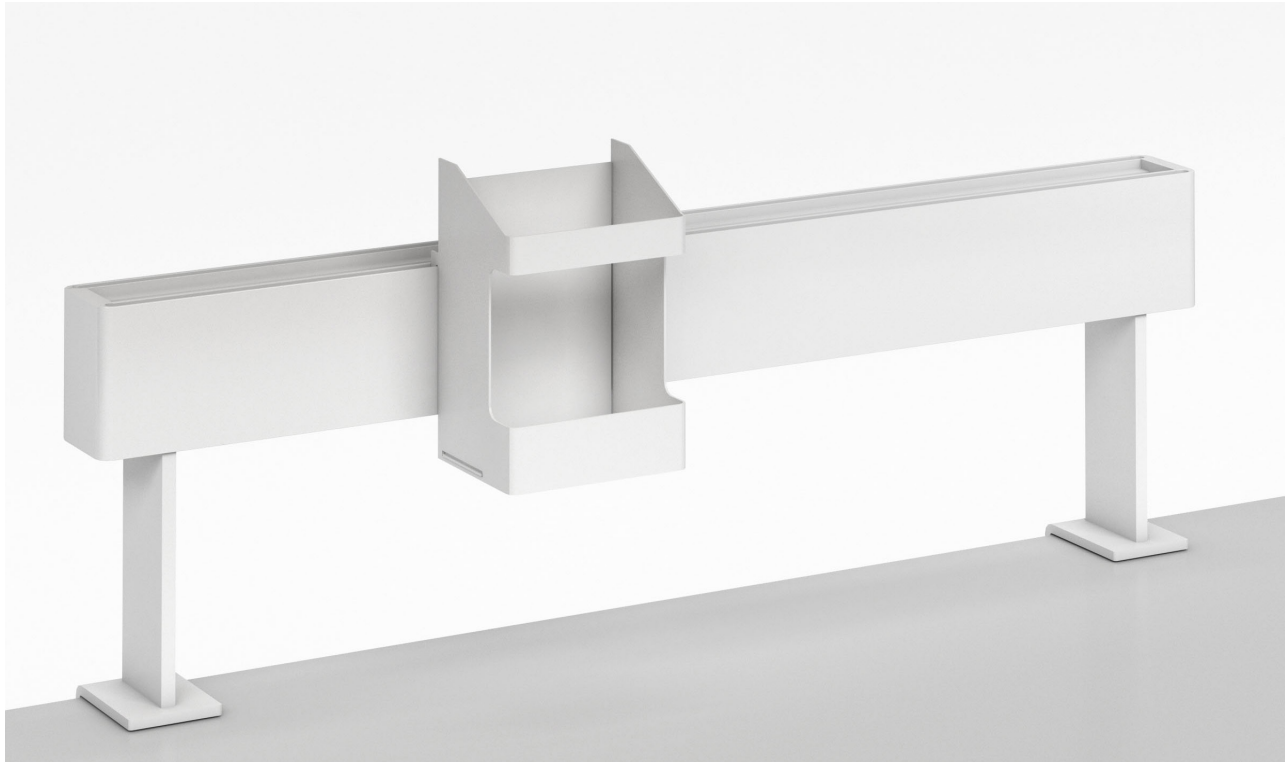


# TYPICAL MG-1017-NEW PORT | NEW WAVE



## TYPICAL MG-1017 OVERVIEW

Products: [NEW PORT DESK ACCESSORIES](#) in White | [NEW WAVE DESK ACCESSORIES](#) in White,

### PRODUCT SPECIFICATION DETAIL

PRODUCT FAMILY	QUANTITY	MODEL	DESCRIPTION	DIMENSIONS HxWxD
New Port	1	NP-53EP	Tool Rail, including end caps.	2-3/8" x 21" x 1-11/16"
New Port	1	NP-10P	Single sided desk mount.	3-15/16" above desk
New Wave	1	NW-30	Pencil cup for use on New Port or Sum tool rail. Use with 3-15/16" or 7-7/8" uprights only.	4-13/16" x 3-1/4" x 2-1/2"



Ancillary Solutions That Make A Statement  
Request a quote - email us at [custserv@magnusongroup.com](mailto:custserv@magnusongroup.com)

800.342.5725

[Magnusongroup.com](http://Magnusongroup.com)